



# XTE Series Display

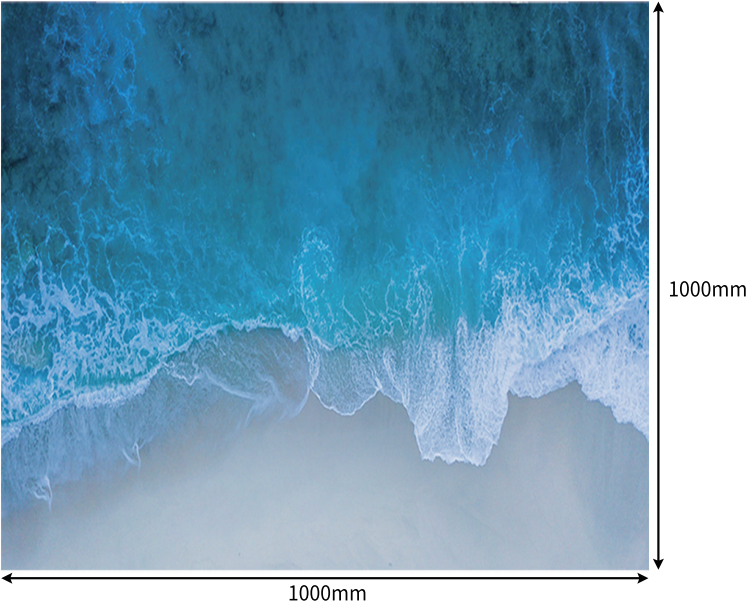
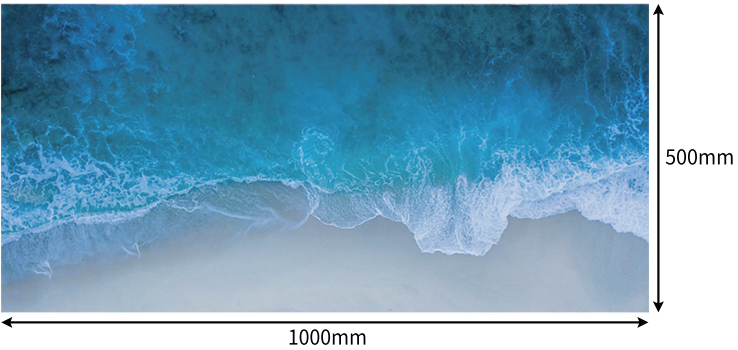
The XT-E series full-color outdoor display is a new generation of LED display, featuring a high-strength, slim aluminum cabinet with excellent sealing. This design ensures strong screen body connection and reliable load-bearing for the entire display. With an IP66 rating, the cabinet is fully waterproof, and the electronics are completely sealed inside, ensuring that our products can perform in even the harshest environments.

- High refresh rate
- High Brightness
- Long Life-span
- Waterproof Rate Ip66
- High Stability
- International Approvals
- Effective Heat Dissipation
- Light-weight
- HD High Definition
- Both Front and Rear Maintenance



Smarter  
Brighter  
Greener

Right angle splicing  
Seamless splicing  
Easy maintenance

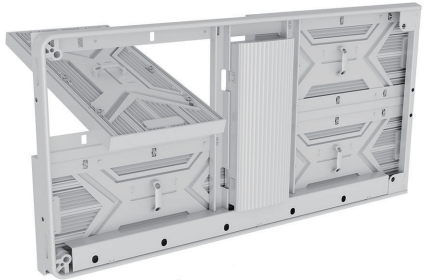


## XTE Series Display Features



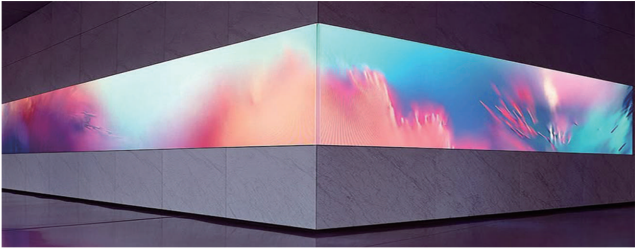
### Smart Module

The smart module can store its own calibration data. When the module is replaced, the calibration data is automatically updated to ensure uniformity across the display. Additionally, the system can monitor the working status of key components and upload the results to the server for continuous performance tracking.



### Front and rear maintenance Easy to connect

Both the control box and LED modules support a front maintenance installation design. The modules can be removed from the front of the LED display using an Allen key. There is no need to reserve a maintenance access space at the rear of the display, which reduces the overall installation depth. This design is ideal for double-sided displays and wall-mounted LED screens.



### L-Shaped Seamless Connection

L-Shape Seamless Connection Technology adopts high-precision splicing technology to achieve high-precision seamless splicing in LED display. This technology avoids the prevalent splicing issues of traditional displays, making each LED screen perfectly connected without gaps. This ensures a continuous image at the L-shaped angle, no interruption in picture quality and uniformity in display effect, thus providing viewers with a perfect visual experience. It is usually suitable for specific environments, such as shopping malls, exhibitions and large squares.



### Working In Harsh Environment

Our LED display is waterproof, damp-proof, dustproof, and equipped with lightning protection, anti-electromagnetic interference, and anti-UV features. It is designed to withstand extreme high and low temperatures, as well as other severe environments, ensuring consistent performance in all conditions.

XT-E Series – Specifications				
MODEL NUMBER	XTE-PH3.91-OB	XTE-PH4.81-OB	XTE-PH6.25-OB	XTE-PH10.42-OB
Pixel Pitch	3.91mm	4.81mm	6.25mm	10.42mm
LEDs	SMD1921	SMD1921	SMD2727	SMD2727
Density of pixel	65536 Pixel/m²	43264 Pixel/m²	25600 Pixel/m²	9216 Pixel/m²
Resolution/Cabinet	256pixel*128pixel	208pixel*104pixel	160pixel*80pixel	96pixel*48pixel
Viewing angle/horizontal	110°	110°	110°	110°
Viewing angle/Vertical	110°	90°	90°	90°
Average power/m² (W)	198	185	162	153
Max power/m² (W)	596	560	553	512
Driving Method	1/8 Scan	1/4 Scan	1/4 Scan	1/4 Scan
Refresh rate	≥3000HZ	≥3000HZ	≥3000HZ	≥3000HZ
Brightness	≥5,000 cds/m²	≥5500 cds/m²	≥6,500 cds/m²	≥6,000 cds/m²
LED cabinet Size	1000mmH*1000mmW/ 500mmH*1000mmW			
Cabinet Material	Aluminium			
Cabinet Weight/m²	32KGs/m²			
Working environment	Outdoor			
Waterproof	IP66			
Grey scale/display color	65536/display 16.7M			
Frame frequency	≥60HZ			
Brightness adjustment	Manual R.G.B each color 256,automatic 8 grades are adjustable			
Control system	Colorlight and Novastar			
System Operation Platform	Windows			
Average no Failure time	≥10000hrs			
Lifetime of Led	≥100000hrs			
Malfunction do rate	< 0.0001			
Working Voltage	90V ~ 240V AC 50/60HZ			
Earth leakage current	0.01mA			
Working / Storage temperature	Working -30℃ ~ 60℃ storage -40℃ ~ 85℃			
Operation humidity and storage humidity(RH)	10%-95%			
Service access	Front and back service			



Shenzhen Only Optoelectronic Technology Co., Ltd.  
Add:18th Bldg Hongfa industrial park Tangtou ave.  
Shiyan st.Bao'an district Shenzhen city, Guangdong, China

Tel:+86-136-8251-1977(Whatsapp & Wechat)  
Fax:+86-755-27651161  
Email: info@onlyled.com  
Web:www.onlyled.com